

China



.22 Box-ID
.22 Boxes of the World

Created and Edited By
Roger E. Huegel

2013



Map and flag from Wikipedia.org

CHINA

INTRODUCTION

.The Olympics offered us the first view of China as a producer of .22s. Their shooting teams used ammunition produced inside of China. All of their .22s should have been post World War II, as there is no record of .22s being manufacturer during the war.

As China opened up for trade with the rest of the world during the 1980s, .22s were first imported into the U.S.A. These imports were halted for whatever reason about 1984.

NORTH CHINA CORP (NORINCO).

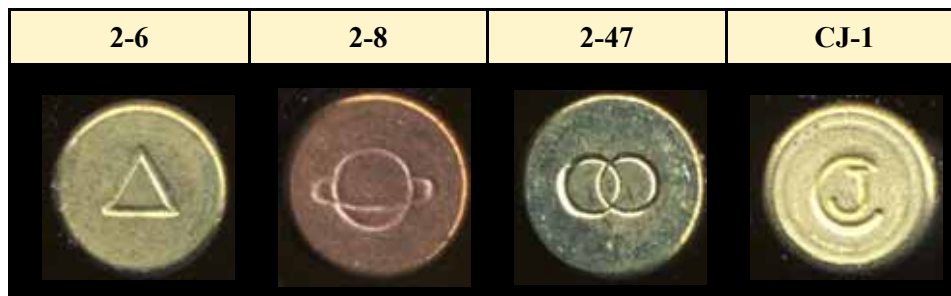
Established in 1980 with the approval of the State Council of China, China North Industries Corporation (NORINCO) is an enterprise group engaged in both products and capital operation, integrated with R&D, manufacturing, marketing, and services. NORINCO mainly deals with defense products, petroleum & mineral resources development, international engineering contracting, optronic products, civilian explosives & chemical products, sports arms & equipment, vehicles and logistics operation, etc. NORINCO has been ranked among the forefront of China's 500 largest state-owned enterprises in terms of total assets and revenue.

From Wikipedia

CHINA

HEADSTAMPS (h/s)

Headstamps from the Dave Clemence collection



THANKS

Special thanks to the following collectors for helping me with this project by supplying me with box images and sharing their knowledge. Presented in alphabetical order.

BERNARD CHEVALIER

DAVE CLEMENCE

GERARD DUTTON

DEAN GRUA

GEORGE KASS

RON MERCHANT

RICH RAINS

CHINA

North China Corp.
BIG STAR BRAND

S-1



LR-1



NC-1

CHINA

North China Corp. BIG STAR BRAND

S-1 **.22 SHORT.** Light green box with red, dark green, white and black printing. Large, one-piece box with end flaps. "2-8" h/s on a copper case. Lead bullet. This box was imported during the 1970s.



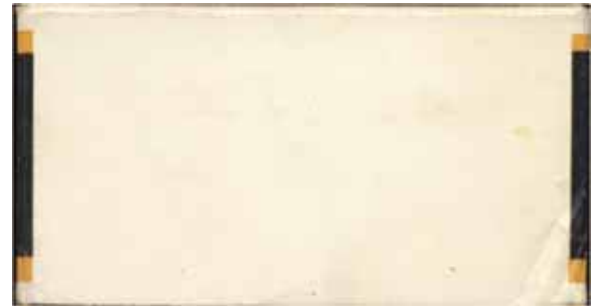
LR-1 **.22 LONG RIFLE.** Red box with white, black and yellow printing. Large, one-piece box with end flaps. "2-8" h/s on a brass case. Lead bullet.



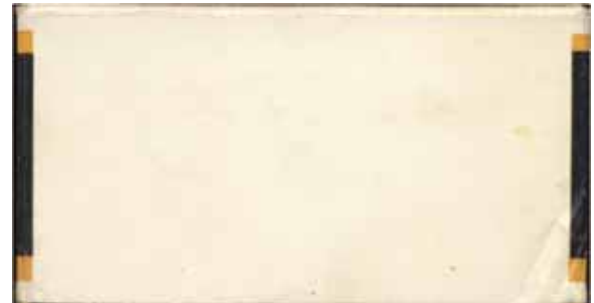
S-1



S-2



S-2.5



LR-1



CHINA

North China Corp.



S-1 **.22 SHORT.** Silver, black, orange and white box with white, black and red printing. Large, one-piece box with end flaps. Product code SQ-I on top. "2-6" h/s on a brass case. Lead bullet. First imported in 1982.



S-2 **.22 SHORT.** White and black box with gold, black, white and silver printing. One-piece box with end flaps. Product code SQ-2 on the top. "2-6" h/s on a nickel case. Lead bullet. First imported in 1982 (with



S-2.5 **.22 SHORT.** Similar to S-2 except product code JD-2 on top. Brass case with "2-6" h/s. Solid lead bullet with 3 cannelures



LR-1 **.22 LONG RIFLE.** Red box with black, white and yellow printing. Large, one-piece box with end flaps. "2-6" h/s on a brass case. Lead bullet.





LR-2



LR-2.5



LR-3



LR-4



CHINA

North China Corp.



LR-2 **.22 LONG RIFLE.** White and green box with green, black and brown printing. Large, one-piece box with end flaps. Product code GS-1 on top. "2-6" h/s en a brass case. Lead bullet. First imported in 1982.



LR-2 **.22 LONG RIFLE.** Similar to LR-2 except product code GC-1 on top. Brass case with "2-6" h/s. Solid lead bullet with 3 cannelures. The cases have a very fine knurl around the body towards case mouth.



LR-3 **.22 LONG RIFLE.** White box with green, red, white and gold printing. Large, one-piece box with end flaps. Product code TJ-1 on top. "2-6" h/s on a brass case. Lead bullet. First imported in 1982.



LR-4 **.22 LONG RIFLE.** White and blue box with black, red, and gold printing. Large, one-piece box with end flaps. Product code JC-1 on top. "2-6" h/s on a brass case. Lead bullet.





LR-5



LR-6



LR-7



LR-7.5



CHINA

North China Corp.



LR-5 **.22 LONG RIFLE.** White and red box with black and gold printing. Large, one-piece box with end flaps. No product code. "2-6" h/s on a brass case. Lead bullet



LR-6 **.22 LONG RIFLE.** White and blue box with black, red, and gold printing. Large, one-piece box with end flaps. No product code. "Contents unknown"



LR-7 **.22 LONG RIFLE (HIGH VELOCITY).** White and black box with red and black printing. Large, one-piece box with end flaps. Product code PT-1 "2-6" h/s on a brass case..

LR-7.5 **.22 LONG RIFLE (HIGH VELOCITY).** Similar to LR-7 but product code PC-1 on top. Brass case with "2-6" h/s. Solid lead bullet with 3 cannellures. The cases have a very fine knurl around the body towards case mouth.





LR-8



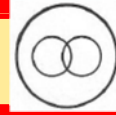
CHINA

North China Corp.



LR-8 **.22 LONG RIFLE.** "SPORT PISTOL". Gold and black box with orange and black printing. Contents unknown.

North China Corp.



L-1



LR-1



LR-2

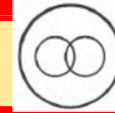


LR-3



CHINA

North China Corp.



L-1 **.22 LONG (BLANK)**. Tan and cream box with red, white and black printing. "2-47" h/s on a brass case.

LR-1 **.22 LONG RIFLE**. Blue box with white, red and black printing. One-piece box with end flaps. No product code. "2-47" h/s on a brass case. Lead bullet.
(a) Medium blue box
(b) Light blue box



LR-2 **.22 LONG RIFLE. (STANDARD VELOCITY)**. Orange, white and red box with white and black printing. One-piece box with end flaps. No product code. "2-47" h/s on a brass case. Lead bullet. First imported in 1984.



LR-3 **.22 LONG RIFLE. (STANDARD VELOCITY)**. Orange, white and red box with white and black printing. One-piece box with end flaps. No product code. "2-47" h/s on a brass case. Lead bullet.



CHINA

North China Corp.
NORINCO

LR-1



A Bottom



B Bottom



LR-2



LR-3



LR-3.5



CHINA

North China Corp. NORINCO

- LR-1 **.22 LONG RIFLE (STANDARD VELOCITY), "PISTOL-REVOLVER"**. Yellow and orange box with black and white printing. One piece box with end flaps. No product code. "CJ-1" h/s on a brass case.. 2k lead bullet.
- (a) "A" bottom
 - (b) "B" bottom. "NC-4" h/s.
 - (c) "B" bottom. "2-47" h/s



- LR-2 **.22 LONG RIFLE (STANDARD VELOCITY), "PISTOL-REVOLVER"**. Green and white box with red and white printing. Large, one piece box with end flaps. No product code. "CJ-1" h/s on a brass case.. Lead bullet.



- LR-3 **.22 LONG RIFLE. "SMOKELESS"**. Two-toned blue box with black and white printing. One piece box with end flaps. No product code. Contents unknown.

- LR-3.5 **.22 LONG RIFLE. "SMOKELESS"**. Two-toned blue box with black, red and white printing. One piece box with end flaps. No product code. Contents unknown. Bilingual English and Chinese.



- LR-4 **.22 LONG RIFLE.** Orange box with red, black and white printing. Contents unknown.

LR-4



CHINA

North China Corp. PLASTIC BOXES

LR-1



LR-2



CHINA

North China Corp. PLASTIC BOXES

LR-1 **.22 LONG RIFLE** "DR-3". Smoke colored plastic box. Red label with gold and white printing.. "2-47" h/s on brass case. Lead bullet

LR-2 **.22 LONG RIFLE** (Same as LR-1 but with green label.

CHINA

North China Corp.
Made for Export

LR-1



CHINA

**North China Corp.
Made for Export**

LR-1 **.22 LONG RIFLE . "PISTOL-REVOLVER"**. White box with black and green printing. One piece box with end flaps. Norinco export to EHFOS JAKT, Sweden

